

# Maison de Luxe

DESIGNER  
SHOW HOUSE  
AT HISTORIC  
GREYSTONE  
ESTATE

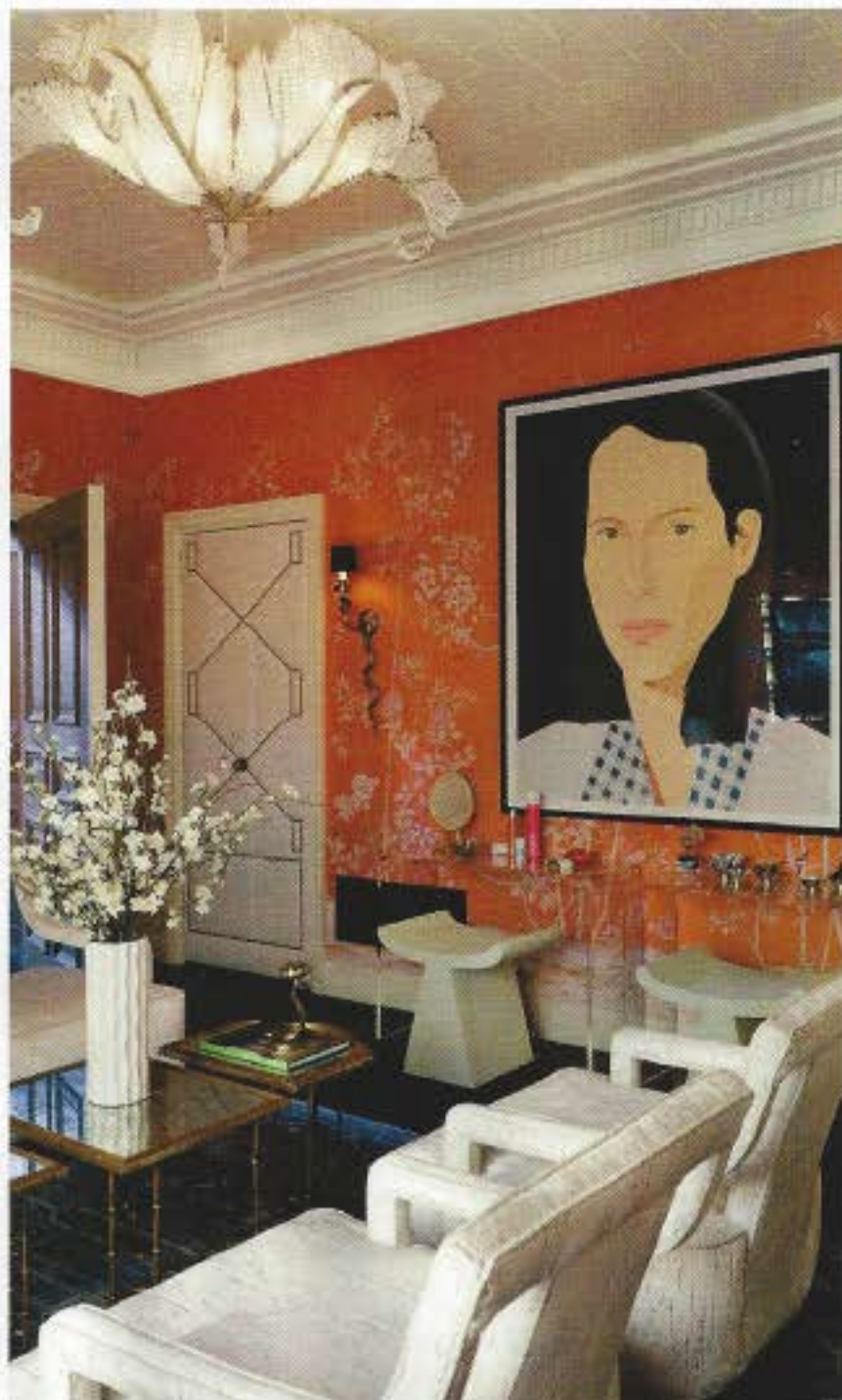
LUXE INTERIORS + DESIGN, IN PARTNERSHIP WITH  
THE CITY OF BEVERLY HILLS AND THE FRIENDS OF GREYSTONE,  
PRESENTS MAISON DE LUXE. TWENTY-THREE TOP DESIGN FIRMS  
TRANSFORM ONE OF THE GREAT HISTORIC ESTATES IN AMERICA.

WRITTEN BY KELLY VENGILL SANCHEZ  
PHOTOGRAPHY BY MATTHEW MILLMAN





Ladies Lounge powder bathroom designed by Luxe Interiors + Design.



## ANDREA MONATH SCHUMACHER

### LADIES LOUNGE

The vision for Andrea Monath Schumacher's Ladies Lounge all began with a hand-painted wallpaper from Paul Montgomery. "I love chinoiserie and just fell in love with this tangerine color," the designer says. Another Paul Montgomery paper glows overhead. Wanting the wallpaper to be the star of the room, the designer kept the furniture mostly white. "The room is a little dark, and white furniture is very glamorous and feminine," she says. There is plenty of seating for Monath Schumacher's imagined visitors to powder their nose and sip a cosmopolitan: a custom sofa in a window nook and four sculptural chairs that surround a Mario Grimaldi table

are set atop a Samad rug. The bar itself is a vintage Asian cabinet that the designer transformed with the addition of white lacquer, lighting and an antique mirror. Model Christy Turlington holds her own from one wall, courtesy of an oversize portrait by artist Alex Katz. Lending some serious sparkle is Niermann Weeks' curving, crystal-ornamented Biarritz pendant, while midcentury French sconces featuring brass cobras contribute to the nature theme, "a play on the Garden of Eden," she says. To further the feeling of luxury, the designer brought in doors upholstered in a creamy white leather and studded with gleaming brass nailheads and Baldwin hardware.

**LADIES LOUNGE SPONSORS:** Baldwin: Door hardware. Duralee: Fabric. Egg & Dart: Accessories, Mario Grimaldi coffee table. Farrow & Ball: Furniture in Pointing No. 2003 in Full Glass. Made Goods: Mirror, vanity stools, vanity table. Niermann Weeks through Egg & Dart: Chandelier. Samad: Rug. **POWDER BATHROOM SPONSORS:** Arte through Egg & Dart: Wallcovering. Lantern Masters: Lighting. Marcalli: Stool. Rohl: Faucet, pedestal sink, toilet.



## FRANCES MERRILL

### BOY'S BEDROOM

A pair of nautical flags purchased on eBay became the driving force for Frances Merrill's redesign of a boy's bedroom and bathroom on the third floor. "Once we decided to use them, I went and purchased the rest of them," she explains. Merrill, of Los Angeles' Reath Design, envisioned the space as a room for Ned and Lucy Doherty's eldest son. "When you have a little boy, you go in with your decorator and put up wallpaper and put the furniture in and then you kind of leave it alone," she says. "As the son got older and his tastes evolved, that other layer came in. To me, that's interesting. If you can look at a room and learn something about the person who lives in it, that's good design." Here, the walls are covered in a wallpaper from Farrow & Ball called Hornbeam. Says Merrill, "The idea was that it was there when the room was first decorated, so it's more neutral. They wouldn't have gone through the trouble to change

it. You get this more layered effect, which I like." Hung against the paper, the flags serve as art. "They're never going to feel refined," Merrill says, "but once they're placed on the wallpaper, they feel elevated." Merrill designed the beds, which she covered with vintage quilts, fur throws and tailored pillows, for Bausman & Company and paired them with a metal table. "I love beautiful old things," Merrill says, "but I also appreciate pieces that are more accessible. It doesn't all have to come from one place. And I really like mixing as many materials as possible." Vintage rugs from Lawrence of La Brea underscore the layered feeling and what Merrill calls the room's "collected vibe." To complement the adjoining bathroom's vintage tile, she chose a richly textured, colorful Moroccan boucherouite rug, also from Lawrence of La Brea, along with lighting from Lantern Masters and faucets from Rohl.

**SPONSORS:** *Bausman & Company: Beds. Farrow & Ball: Bedside table lampshades in Pelt No. 254, panel inserts in Hornbeam Wallpaper BP 5002, trim in All White No. 2005 in Estate Eggshell, wall sconce shades in Castle Gray No. 92 in Estate Eggshell. Lantern Masters: Bathroom lighting. Made Goods: Bookcase. Rohl: Faucets. The Urban Electric Co.: Bedside table lamps.*

## PLATNER & CO. FEMME SUITE

The mother-and-daughter design team of Peggy Platner and Tessa Platner took on the challenge of transforming what was once a boy's bedroom on Greystone's third floor. Employing their signature light and feminine style, the California-based pair overhauled the space into a soft, romantic guest retreat. Expanding on Peggy's vision of a luxurious haven for a movie star from the 1940s or '50s, the duo created a getaway for a woman with what Tessa calls "classic, timeless taste." An opulent wallpaper from Stark—Paper Rose—sets the mood. "It's a romantic, large-scale print of blossoms in warm, feminine colors and highlighted with gold," Tessa says. The paper is a fitting backdrop for Platner & Co.'s Femme bed, swathed in a new blush-colored Montara velvet from the Peggy Platner Collection, which offers a contemporary take on luxury. "The bed is completely upholstered, even the legs,"

Tessa says. "It's very feminine and soft, with modern lines." The designers also created bespoke bedding for the room. "The custom details—the bedding and the pillows—is something we've always loved to do," Peggy says. Adds Tessa, "All those little facets matter so much. And we want our fabrics to be very usable." A pair of commodes in a bleached-and-lacquered koa-wood veneer by Jean de Merry joins Fuse Lighting's frosted-rock-crystal-embellished Ramona sconces, procured through Thomas Lavin, to add touches of glamour along with a Samad rug. "I picture the room in the early morning light, with the blossoms and the sheen on the wallpaper feeling really luminous, airy and soft," Tessa notes. "The light that comes in from the side of the house is just stunning. This is a place you want to relax in; it's a place where you can read a book on the window seat."

**FEMME SUITE SPONSORS:** Farrow & Ball: Walls in Savage Ground No. 213 in Estate Emulsion and trim touch-up in New White No. 59 in Estate Eggshell. Samad: Rug. **POWDER ROOM SPONSORS:** Arte through Egg & Dart: Wallcovering. Kallista through Snyder Diamond: Vanity, wall cabinet. Lanterna Masters: Lighting. Rohi through Snyder Diamond: Michael Berman faucet and towel bar.



Lower-level powder room designed by Luxe Interiors + Design.

